

COMUNE DI CAPACCIO PAESTUM

AREA IV
URBANISTICA OPERE PUBBLICHE



RIQUALIFICAZIONE AMBIENTALE E MESSA IN SICUREZZA DELLA FASCIA LITORANEA

PRIMO STRALCIO FUNZIONALE

Progetto definitivo approvato con
[] Delibera di CC [] Delibera di GC [] Determinazione Dirigenziale
n. _____ del ____/____/____

RUP- PROGETTISTA - SUPPORTO AL RUP

Ing. Giovanni Vito Bello

Arch. Luca Cerullo

SINDACO

Avv. Francesco Alfieri



VER. 1.0	VERSIONE INIZIALE	DATA __/__/__
VER. N. X	NOTE DI VERSIONE	DATA VERSIONE

FASE PROGETTUALE

PROGETTO
ESECUTIVO



ALL. 1. RELAZIONE PUBBLICA ILLUMINAZIONE
CARATTERISTICHE PALI ILLUMINAZIONE

DATA: FEBBRAIO 2020

RE06

CARACTERÍSTICAS

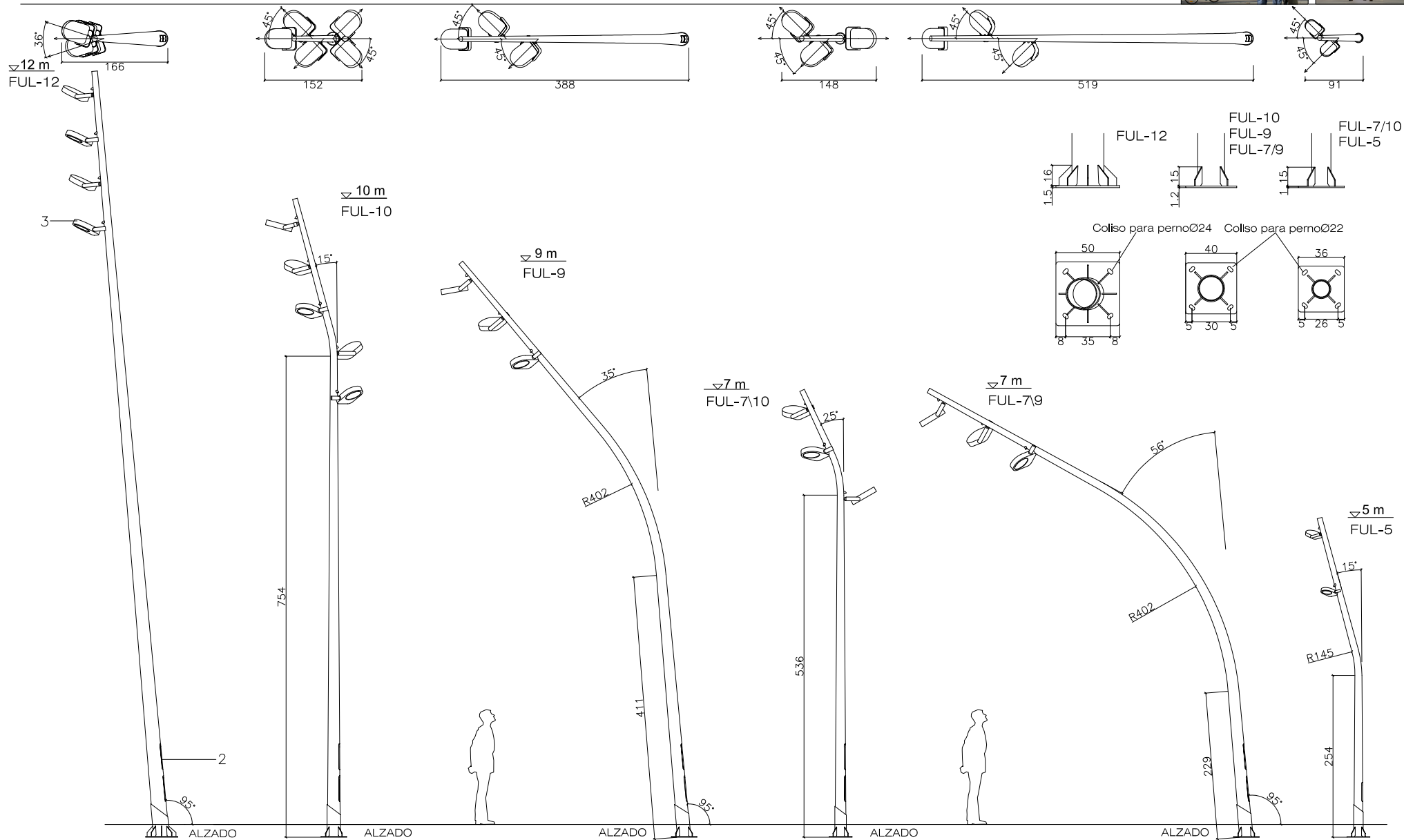
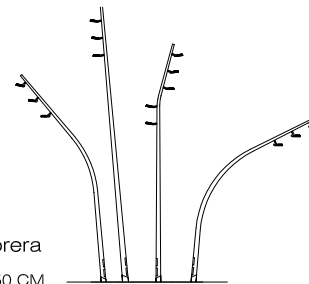
- columna troncocónica (conicidad 12,5%) de:
 - acero cor-ten (e=5mm)
 - acero galvanizado (e=4mm)
 soldadura con cordón continuo en atmosfera de argón.
- puertas de registro y cerramiento con llave de tubo rectangular.
- proyectores recomendados CRIPTO LED Disano 31W, 86W, 125W or 196W
colores plata o grafito, optica asimétrica, 4000K, IP66, CRI80, 1-10V opcional.

Otros: Proyector MILOS Istanium LED / Milos HID (descarga MH) de Simon Lighting

- F-12: 254kg / F-10: 184kg / F-9: 159kg / F-7\10: 149kg / F-7\9: 162kg / F-5: 112kg

DISEÑO / DESIGN Jaume Artigues / Pere Cabrera

E 0 CM 150 CM



CARACTERISTICAS

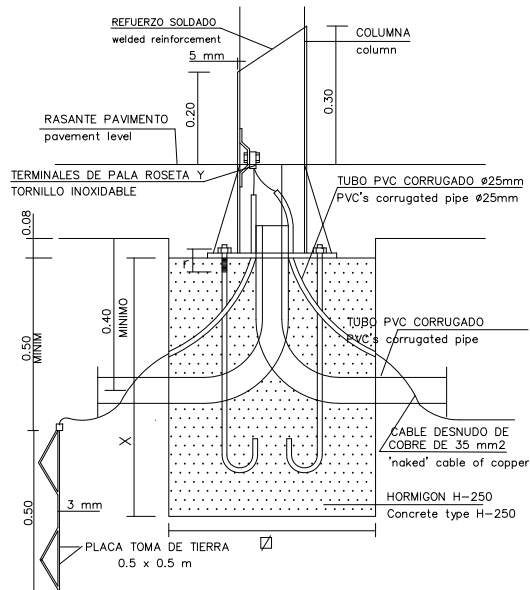
1. tapered column (taper 12.5%) made of:
 - a. cor-ten steel (e=5mm)
 - b. galvanized steel (e=4mm)
 continuous seam weld in argon atmosphere
2. inspection hatch and lock with rectangular tube key.
3. floodlight recommended CRIPTO LED Disano 31W, 86W, 125W or 196W.
 colour silver or graphite, asimétric optic, 4000K, IP66, CRI80, 1-10V optional.
 Others: Floodlight MILOS Istanium LED / Milos HID (HM) by Simon Lighting
4. F-12: 254kg / F-10: 184kg / F-9: 159kg / F-7\10: 149kg / F-7\9: 162kg / F-5: 112kg



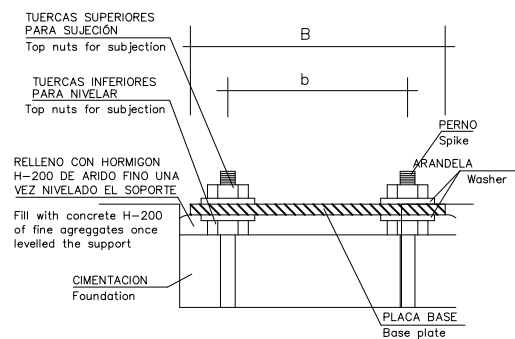
SERIE FUL®

DETALLE CIMENTACIÓN COLUMNA TIPO Y TOMA DE TIERRA

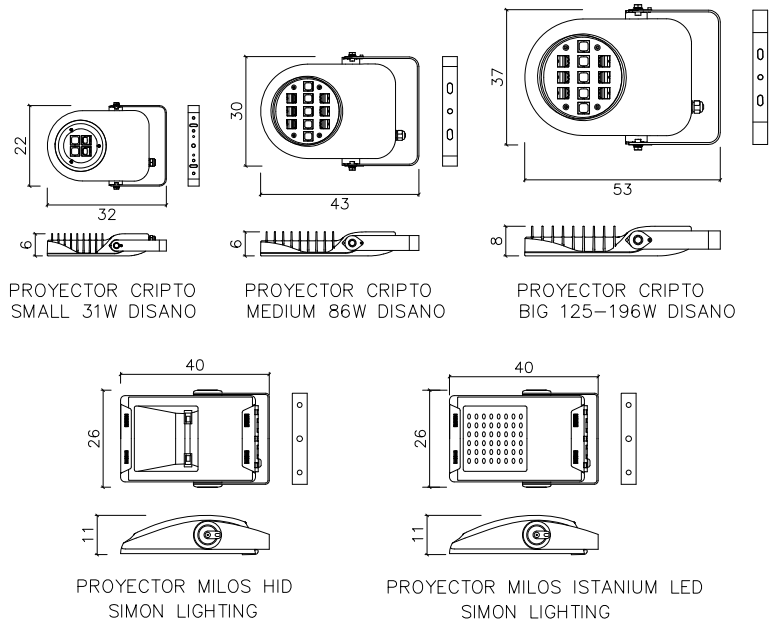
DETAIL OF COLUMN FOUNDATION AND ELECTRICAL CONNECTION



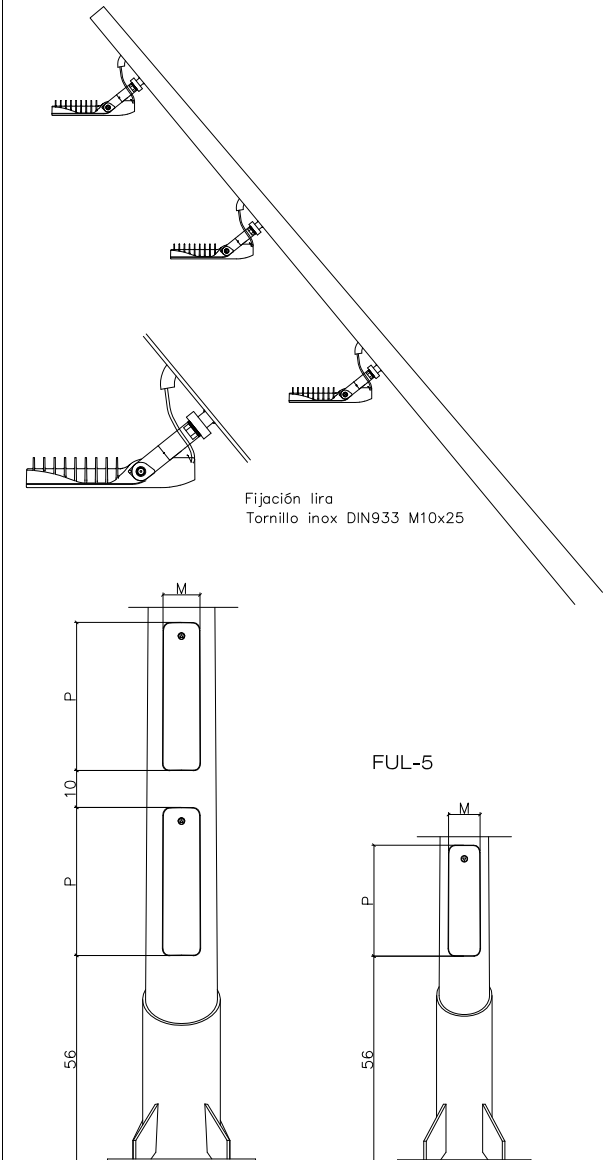
CIMENTACIÓN Y PERNOS FOUNDATION AND SPIKES



PROYECTORES FLOODLIGHTS



	FUL-12	FUL-10	FUL-9	FUL-7\10	FUL-7\9	FUL-5
COLUMNAS columns	H=12 m	H=10 m	H=9 m	H=7 m	H=7 m	H=5 m
Ø SUP	88 mm	77 mm	77 mm	77 mm	77 mm	77 mm
Ø INF	240 mm	200 mm	200 mm	165 mm	200 mm	142 mm
PUERTAS REGISTRO inspection hatch	2	2	2	2	2	1
P	400 mm	400 mm	400 mm	400 mm	400 mm	300 mm
M	100 mm	100 mm	100 mm	100 mm	100 mm	85 mm
CIMENTACIÓN foundation						
(dim.aprox.) X	120 cm	100 cm	80 cm	80 cm	80 cm	80 cm
Ø	90 cm	80 cm	80 cm	80 cm	80 cm	80 cm
PLACA BASE base plate						
pernos(4)/spikes	M-24x800	M-22x700	M-22x700	M-22x700	M-22x700	M-22x700
cartelas/console	160mm(8)	150mm(4)	150mm(4)	150mm(4)	150mm(4)	150mm(4)
Ø placa B/plate B	500 mm	400 mm	400 mm	360 mm	400 mm	360 mm
Ø centros b/centers	350 mm	300 mm	300 mm	260 mm	300 mm	260 mm
E	15 mm	12 mm	12 mm	12 mm	12 mm	10 mm
PROYECTORES projectors	4	3 6 5	3	3	3	2
n° rótulas	4	3 6 5	3	3	3	2



Update 01/12/16

www.escofet.com

escofet

f.08b